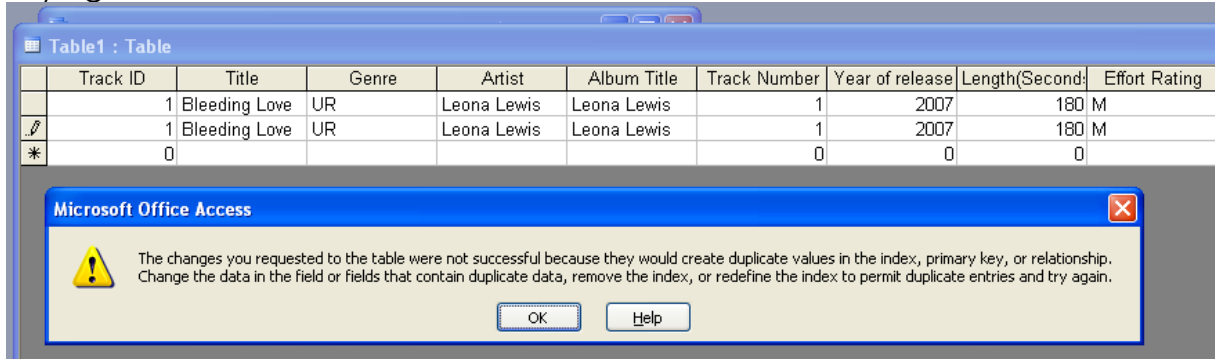


Test Buddy-testing the database By Derek Otterburn



1.Track ID

When I tried to enter two identical pieces of information a message appeared saying.

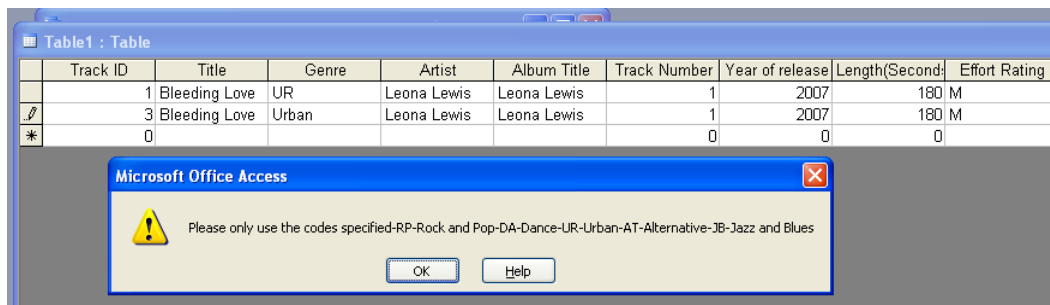


This shows that Sam has created his Track ID section is unique and that it is set in the primary key.

2.Genre

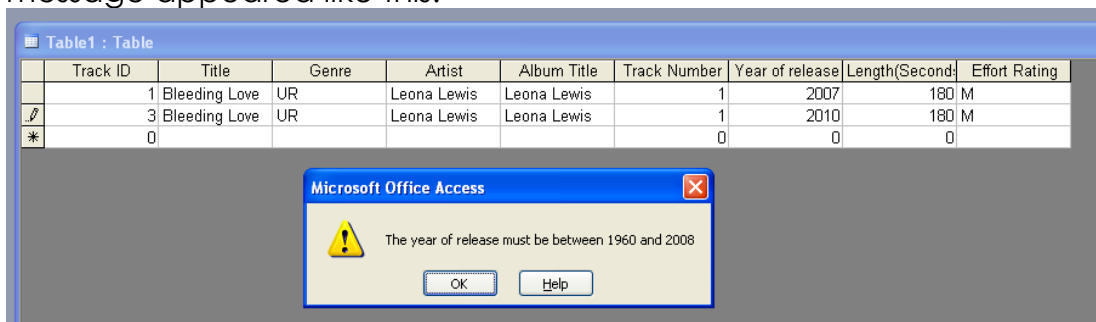
I tested Sam's field type Genre by trying to enter the word "Urban". To be able to even write Urban I had to get Sam to change the field limit to a higher number so I could enter more letters than two. After he had done this I tried to write "Urban"

instead of "UR" and this came up:



3.Year of Release

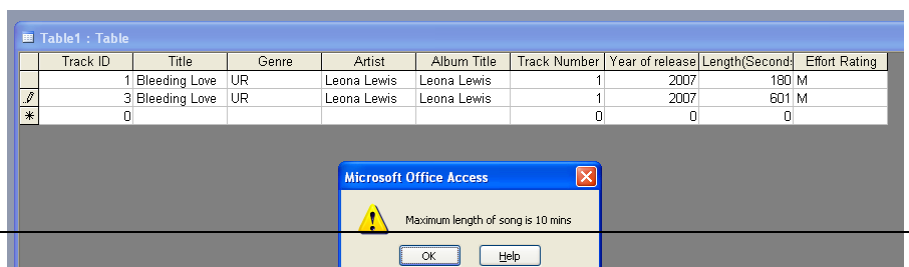
To test the year of release I tried to enter the year as 2010. Having done this, a message appeared like this:



This shows that Sam has made it so songs in the future or very old songs can't be entered into the database.

4.Length of song

I tested the length of seconds column to see if



there were any restrictions and by entering a value higher than 600, Sam's validation text appeared saying:

5.Effort Rating

Our teacher told us to use a drop-down box so that only H or M or L could be entered into this field. I screen to show that he had made a drop down box.



The screenshot shows a table titled "Table1 : Table" with the following columns: Track ID, Title, Genre, Artist, Album Title, Track Number, Year of release, Length(Second), and Effort Rating. The Effort Rating column contains a dropdown menu with options H, M, and L.

Track ID	Title	Genre	Artist	Album Title	Track Number	Year of release	Length(Second)	Effort Rating
1	Bleeding Love	UR	Leona Lewis	Leona Lewis	1	2007	180	M
3	Bleeding Love	UR	Leona Lewis	Leona Lewis	1	2007	180	M
0					0	0	0	H

I have now tested all the required aspects to see if they work of my friend's database and I found out that it works every time.