

Test buddy – Testing the database.

By Vicky Taylor.



1) Track ID.

Track ID	Title	Genre	Artist	Album title	Track number	Year of release	Length (secs)	Effort rating
1	Staring at the n rp		Gallows	The Gallows	3	2007	3	H
1	staring at the ru rp		Gallows	The Gallows	3	2007	3	H
0					0		0	

Microsoft Office Access

The changes you requested to the table were not successful because they would create duplicate values in the index, primary key, or relationship. Change the data in the field or fields that contain duplicate data, remove the index, or redefine the index to permit duplicate entries and try again.

OK Help

When I entered the same information twice, this message came up. It does not allow me to enter the same information more than once. This shows that Jess has successfully made sure that the track ID is unique data with no duplicates.

2) Genre

Track ID	Title	Genre	Artist	Album title	Track number	Year of release	Length (secs)	Effort rating
1	Staring at the n rp		Gallows	The Gallows	3	2007	207	H
2	Staring at the n rock							
0					0		0	

Microsoft Office Access

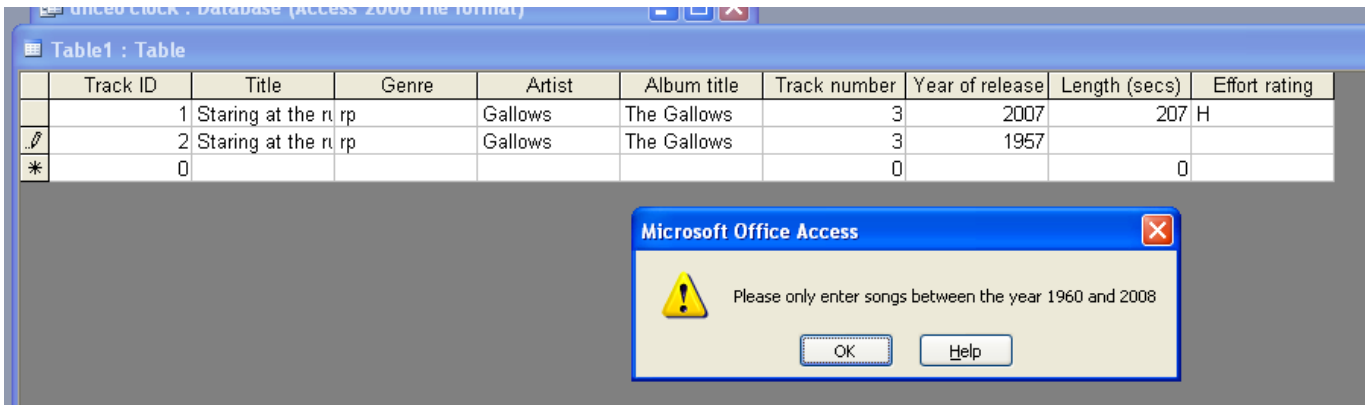
Please only enter the given codes. RP - Rock & Pop, DA - Dance, UR - Urban, AT - Alternative, JB - Jazz & Blues

OK Help

When I entered the word 'rock' into the genre column it came up with this message. This shows that Jess has successfully entered a validation text and

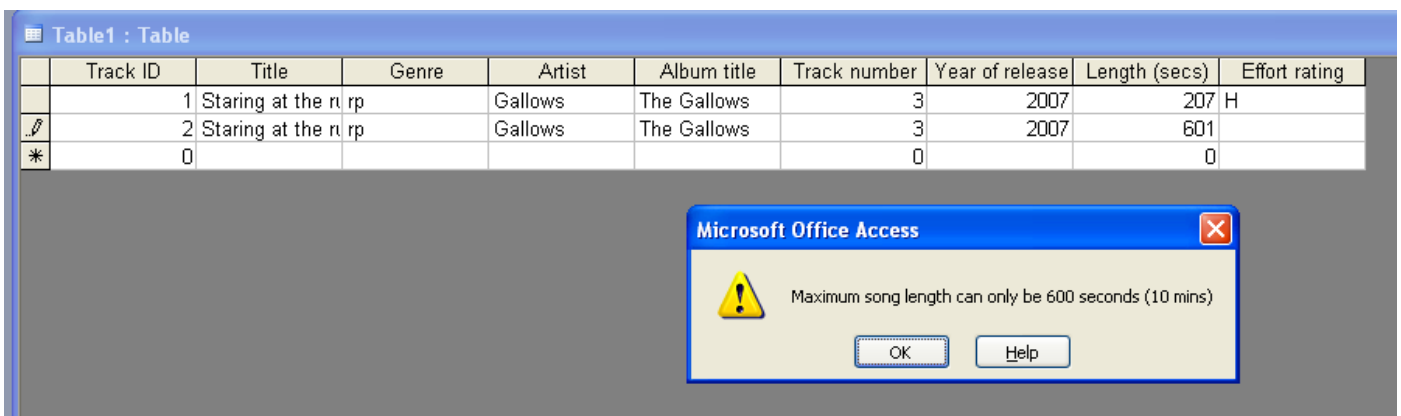
rule to ensure that the correct information is entered. E.g. 'rp', 'da', 'ur', 'at' & 'jb'.

3) Year of release.



When I entered the year of 1957 it came up with this message. This shows that jess has successfully entered a validation text and a validation rule to ensure that the users can only enter the correct information.

4) Length



When I tried to enter the length of a song higher than 600 second it came up with this message. This shows that jess successfully entered a validation text and rule so that the user cannot enter a length higher than 600 seconds.

5) Effort rating.

When I clicked on the effort rating box a drop down box pops up with 3 selections in it. This shows that jess has successfully made a sensible way to enter the correct information.

