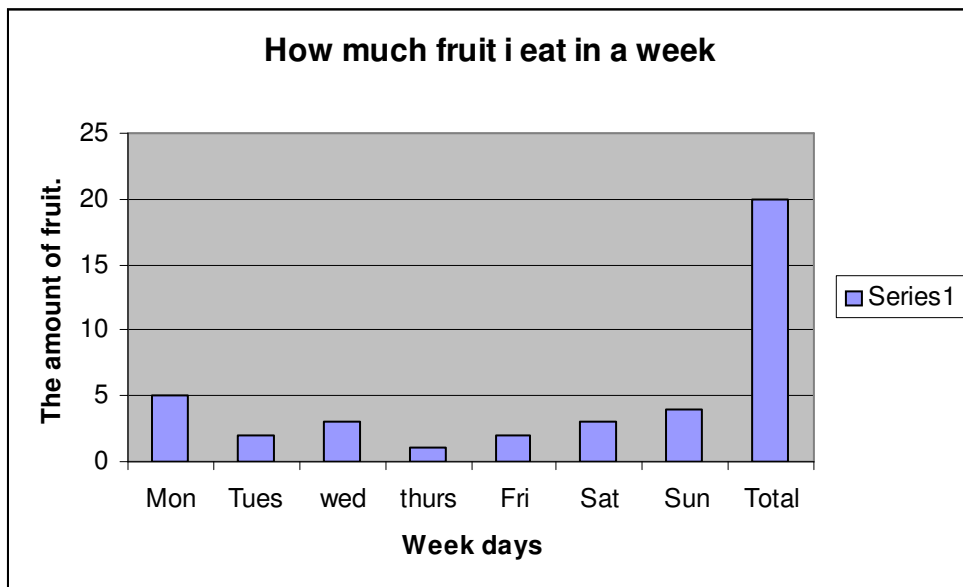


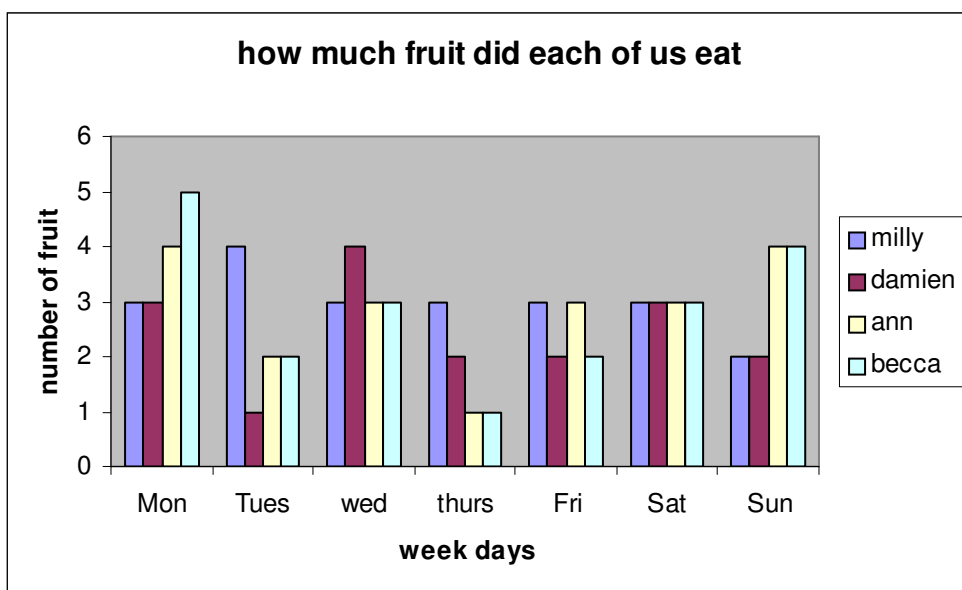
How much did I eat?

This chart shows how much fruit I ate each day for a week. I think I eat a reasonable amount of fruit during the week.

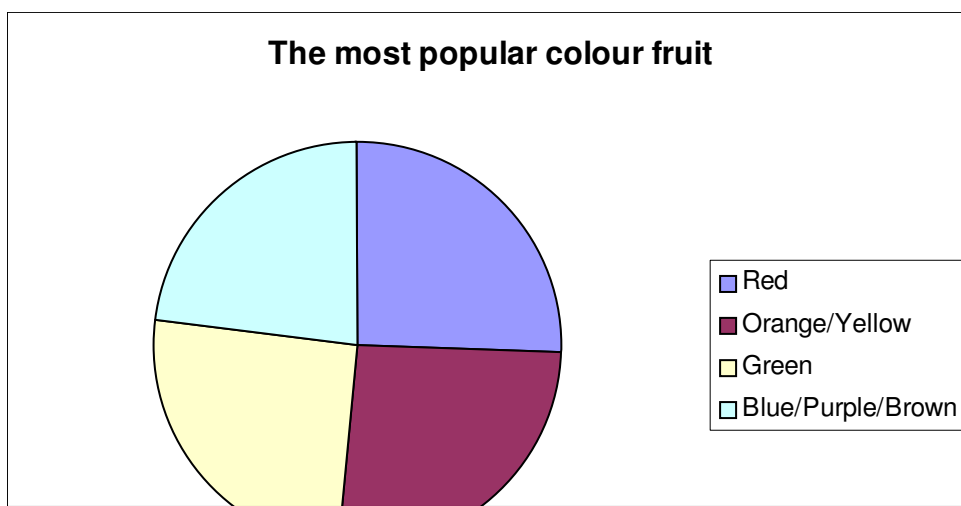


How much fruit did each of us eat in week?

This chart shows that I eat the most fruit on Monday but Millie, eat the most on Tuesday and Damien eat the most on Wednesday and Milly again eat the most on Thursday and milly and ann. eat the same on Friday and we all eat the same on Saturday and Sunday ann. and me eat the same on Sunday



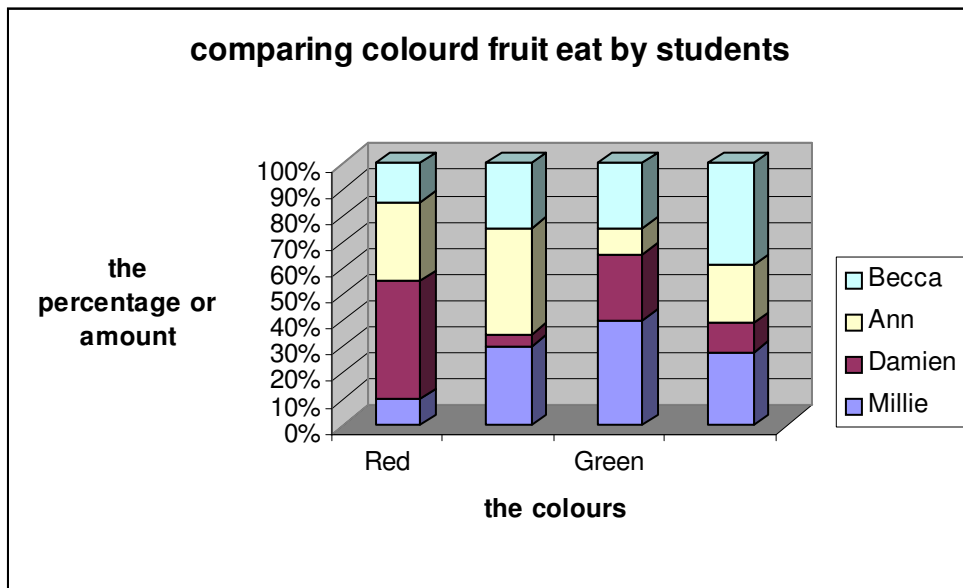
Which colour group is most popular? This pie chart shows that the most popular colour group is red yellow and orange and green. And the least popular is brown purple and blue so I need to make recipe cards for that kind of fruit so that people eat more of that colour.



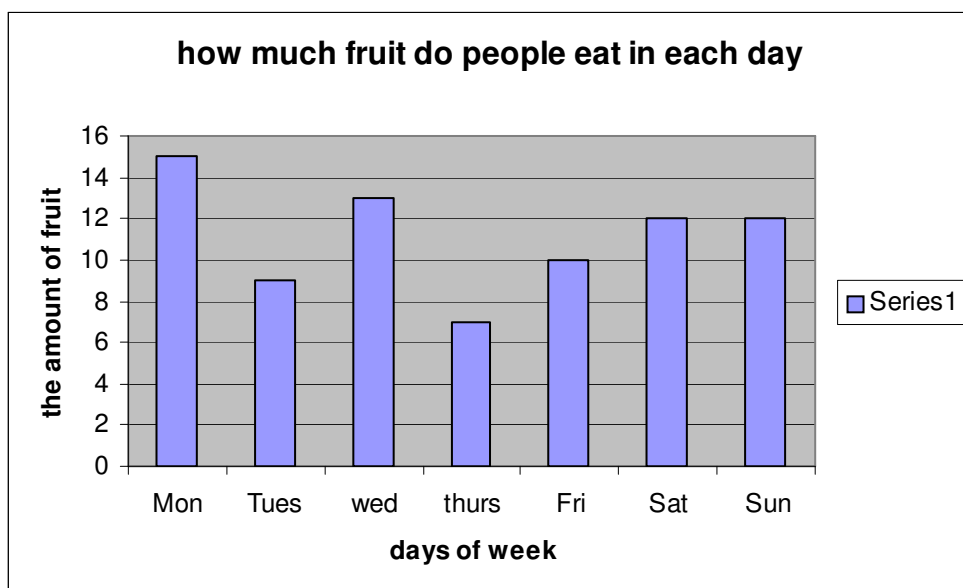
How do we compare?

This chart compares the amount of fruit eaten in each colour group for each student. (Comparative chart)

I think that. Damien eats the most of the red fruit and Millie eat the most of the green fruit, also ann. eat the most of the orange and the yellow, and I eat the most of the blue purple and brown.



Complete the results by adding one chart of your own. Add a sensible title and explain what the chart shows.



This is my chart and this shows that how much fruit did people eat each day and it sums up that Monday and Wednesday were the most popular days for people eating fruit. Also on the weekend that was a time were fruit was eaten by most of the people, but the rest of the week wasn't such a high amount of fruit being eaten.